



# Postgraduate Orientation Programme



**SUNWAY**  
UNIVERSITY

Faculty of  
**MEDICAL &  
LIFE SCIENCES**

JANUARY 2026

# Table of Contents

<b>Welcome Message</b>	01
<b>Orientation Programme</b>	02 - 03
• Pre-Orientation	
• Orientation Schedule	
<b>Orientation Checklist</b>	04
<b>Settling in at Sun-U: The Essential Guide</b>	05
• Student Identification Card	
• Dress Code	
• Smoke-free Campus	
• Commuting to Campus	
<b>Klang Valley Integrated Transit Map</b>	06
<b>The Campus: Sunway City</b>	07



# Welcome Message



Professor Dr  
**Raja Affendi Raja Ali**  
Dean, Faculty of Medical  
and Life Sciences

The Faculty of Medical and Life Sciences of Sunway University envisions to become a leading provider of healthcare and life sciences education with a dedicated pursuit of research and service excellence. The Faculty provides a platform for an engaging and nurturing teaching and learning experience of the highest standards and quality. Furthermore, we have a very established biological, life sciences and psychology programme, that link and engage with many established industries. Additionally, we also collaborate with Harvard University in organising the Harvard's South East Asia Healthcare Leadership (SEAL) programme as well as with the University of Cambridge and University of Oxford on various educational and research initiatives.

Advancements in medicine and healthcare provision are driven by technological innovations and an improved understanding of the health disease continuum. Our academic staff have been trained in various healthcare and life sciences disciplines that allow for the integration of an interdisciplinary approach in our research endeavours. We have also fostered a collaborative network involving various national and international researchers that ensure that our focus is in discovering new knowledge and translating discoveries to modalities and strategies that ultimately, save and improve the quality of lives.

# Orientation Programme

Pre-Orientation

2 – 8 January 2026

Orientation

9 January 2026

## Pre-Orientation

Please visit the University orientation [website](#) and go through the following (by the 9<sup>th</sup> of January 2026):

### 1 Let's Get You Started – IT Services

- Activate your student account to access your iMail, eLearn, iZone and Microsoft Office 365. (You may obtain your Student ID Number from your Offer Letter)
- Please note that the Student Account Activation can only be done 7 DAYS before semester commencement, i.e. from the 5<sup>th</sup> of January 2026 onwards.



### 2 Let's Settle In

- **Campus Highlights**
  - > Campus Life at a Glance
  - > Campus Tour
- **Campus Life**
  - > Spotlight on Student Life
  - > International Students
  - > Stay Healthy, Stay Safe



### 3 Install Microsoft Teams and Zoom

Install Microsoft Teams and Zoom applications on your laptop, PC or smartphone. Ensure that you have activated your student account before you join live sessions in Microsoft Teams platform. Some of the live sessions would be done in Teams and Zoom.



### 4 Download Sunway MyCampus App

**Sunway MyCampus App**, your official campus navigator, is available on the Apple App Store or Google Playstore.



# Orientation Day

Pre-Orientation

2 – 8 January 2026

Orientation

9 January 2026

## Instructions:

1. Please ensure that your student account has been activated before the 9<sup>th</sup> of January 2026.
2. Login to FMLS eLearn page at this link: <https://elearn.sunway.edu.my> for more information.

## Friday | 9 January 2026

Time	Activity	Venue
9:00am	<b>Welcome and Introduction to FMLS Priorities Research Areas</b> <i>Professor Dr Long Chiau Ming</i> <i>Deputy Dean (Research and Sustainability)</i>	Lecture Theatre 2 Ground Floor, Sun-U
9:30am	<b>Administrative Procedures</b> <i>Ms Nur Amalina Zainal Abidin</i> <i>Manager (Research and Postgraduate Studies)</i>	
10:00am	<b>WELCOME BY HEAD OF DEPARTMENT AND HEAD OF SCHOOL</b>	
	<b>Biomedical Sciences</b> <i>Professor Felicia Chung Fei Lei</i>	Lecture Theatre 2 Ground Floor, Sun-U
	<b>Psychology</b> <i>Professor Keng Shian Ling</i>	Meeting room 2, Level 11, Sun-U
10:15am	<b>YOUR EDUCATIONAL SUCCESS PLAN BY THE PROGRAM LEADER</b>	
	<b>Biomedical Sciences</b> PhD in Biology & Master in Life Sciences <i>AP Dr Wu Yuan Seng</i>	Lecture Theatre 2 Ground Floor, Sun-U
	<b>Medical Sciences</b> PhD in Medical Science & Master in Medical Science <i>AP Dr Wu Yuan Seng</i>	
	<b>Psychology</b> Master in Psychology & PhD in Psychology <i>Dr Lee Ai-Suan &amp; Dr Grace Yap Chin Choo</i>	Meeting Room 2, Level 11, Sun-U
12:15pm	<b>Faculty of Medical and Life Sciences Tour</b> FMLS Academic Offices   Biology Labs   Psychology Labs	
2:00pm	<b>Library Information Skills Workshop</b> <i>Goh Wei Haan</i> <i>Head, Reference and Research and Academic Services</i> <i>Tun Hussein Onn Sunway Library</i>  <a href="#">Postgraduate - Library Video</a> catered just for you!	Instructional Lab Library, Basement Level

# Orientation Checklist

## PRE-ORIENTATION

- 1. Check for Welcome email from the University in your iMail**  
*iMail is your formal university email correspondence*
- 2. Browse the Orientation website**  
[Orientation | Sunway University](#)
- 3. Check your orientation schedule**
- 4. Activate your student account**  
*Student Account Activation can only be done 7 DAYS before the semester commences. Not required if you already have an existing Sunway iMail account.*
- 5. Submit incomplete registration documents (if any) to [srga-op@sunway.edu.my](mailto:srga-op@sunway.edu.my)**
- 6. Clear your payments**  
*– tuition fees and other related semester fees*
- 7. Register for [Library Tour](#)**
- 8. Download Sunway MyCampus App** from Apple App Store or Google Playstore

## SCHOOL ORIENTATION

- 9. Attend physical School orientation**  
*Refer to your [orientation schedule](#) for details*
- 10. Collect your Student ID from School admin**
- 11. Online Subject Enrolment**  
*Complete your online subject enrolment before the semester starts. Liaise with your School Admin if you require further assistance.*

## END OF ORIENTATION

# Settling in at Sun-U: The Essential Guide

- **Student Identification Card**

You will **receive your** Student ID card with your photo, name and your student ID number **during School orientation**. This card shows you are part of Sunway University and helps you use different campus services. Remember, your ID card belongs to the university and cannot be passed to others. It is important to keep it safe and always have it with you while on campus. **If you happen to lose your student card, feel free to reach out to the Registry for guidance.**



- **Dress Code**

You are expected to dress neatly and modestly, taking cultural norms and sensitivity into consideration.

- **Smoke-free Campus**

You must not smoke and/or vape in any form, including the use of traditional cigarettes, electronic cigarettes, pipes, and other smoking devices, within the institution premises and all Student Residences managed by Sunway Education. Refer to the [Student Handbook](#) and the [Student Code of Conduct](#) for more information.



- **Commuting to Campus**

The **parking facilities** operate on a first-come, first-served basis. The campus basement parking is available at RM 5.00/day. Alternative parking at Sunway Pyramid and the Sunway BRT station is also available.



Student season parking is available at Sunway Pyramid and is priced at RM 80.00/month. You may apply via [Sunway Smart Parking](#) or the Sunway Super App. Feel free to contact the nearest carpark helpdesk at Sunway Pyramid for further information. Kompleks BRT Sunway parking is available at RM 7.00/day. All parking rates are subject to change.

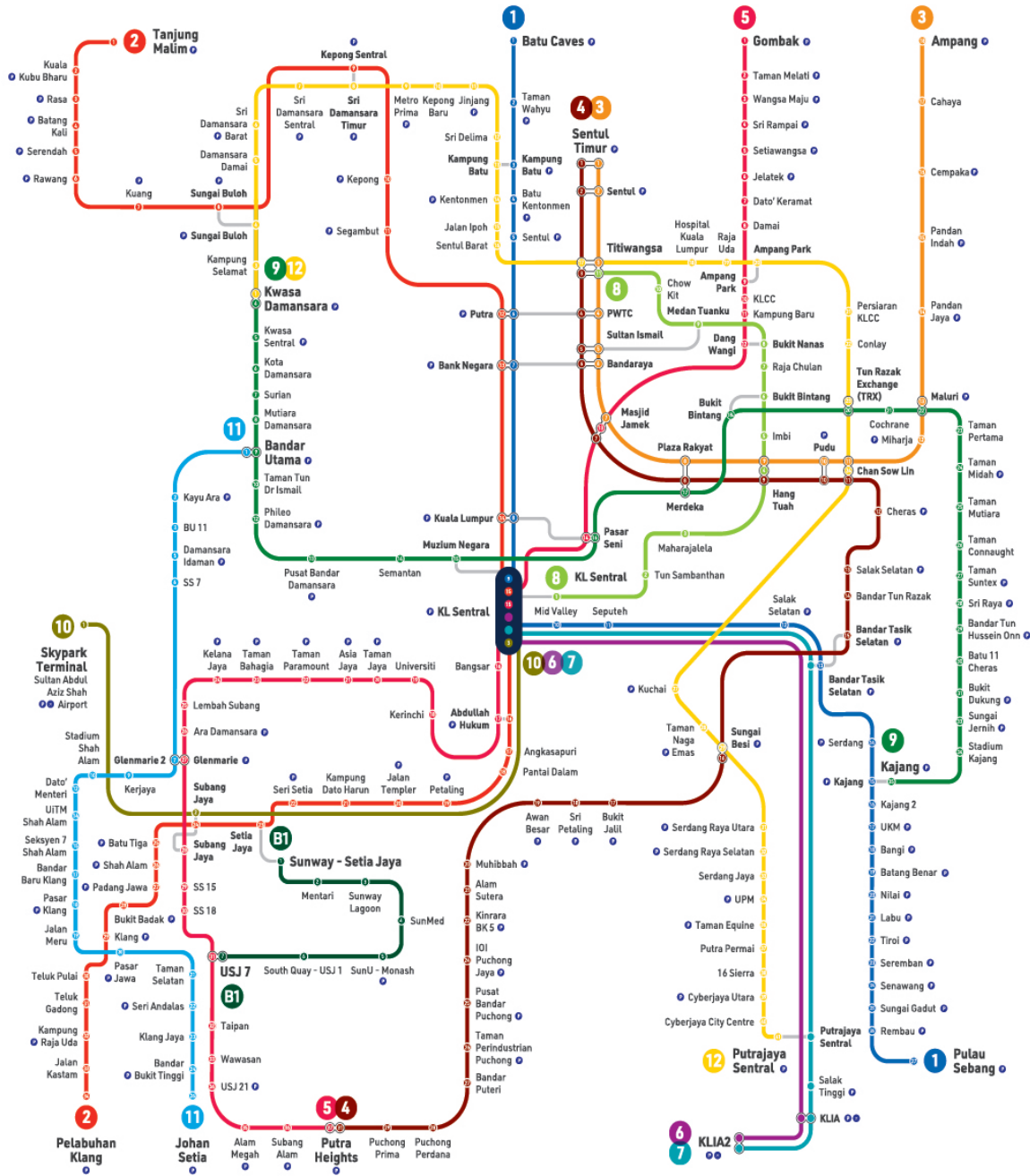


The **Free Shuttle Bus** operates within the city where the University is located and is available for all students, staff and visitors.

The university is also connected to the SunU-Monash BRT Station, which can be accessed via the **Bus Rapid Transit (BRT)-Sunway Line**.

Refer to the next page for the [Klang Valley Integrated Transit Map](#).

# Klang Valley Integrated Transit Map



**1** KTM Larian Batu Caves - Pulau Sebang  
**2** KTM Larian Tanjung Malim - Pelabuhan Klang  
**3** KTM Larian Klang - Putrajaya Sentral  
**4** KTM Larian Klang - Putrajaya Sentral  
**5** LRT Larian Kelana Jaya  
**6** LRT Larian Kelana Jaya  
**7** LRT Larian Kelana Jaya  
**8** ERL Larian KLIA Transit  
**9** MRT Larian Kajang  
**10** MRT Larian Kajang  
**11** LRT Larian Shah Alam (Alam Datang)  
**12** BRT Sunway Line  
**61** BRT Sunway Line  
**P** Terminal Lapangan Terbang  
**A** Terminal Lapangan Terbang Airport

Stesen Sambungan Connecting Station | Stesen Pertukaran Interchange Station | Stesen Station | Stesen Terminal Terminal Station

Informasi Peta | Map Information



Muat Turun Peta  
Download Map  
**rapidKL**

**Waktu Operasi Perkhidmatan/Service Operating Hours**

Inis - Sabtu/ Monday - Saturday: 6:00 pagi/ am - 12:30 tengah malam/ am  
 Ahad dan Cuti Umum/ Sunday and Public Holidays: 6:00 pagi/ am - 11:30 malam/ pm

\*Waktu operasi perkhidmatan adalah tertakluk kepada keadaan dan keperluan semasa/  
 Service operating hours are subject to current situation and needs.

03 7885 2585

myrapid.com.my

suggest@rapidkl.com.my

MyRapidKL

AskRapidKL

For more details, visit: <https://myrapid.com.my/bus-train/rapid-kl/rapid-kl-integrated-transit-map/>

All information is correct at the time of printing (as of 22 December 2025). This schedule may be subject to change.

# THE CAMPUS

All information is correct at the time of printing (as of 22 December 2025). This schedule may be subject to change.



## Connectivity & Transportation



### On-Campus Accommodation



## PARKING OPTIONS\*

Incorporate walking into your daily routine to give your mood and health a boost!

### SEASON PARKING AT SUNWAY PYRAMID

10 mins walk to campus (via Canopy Walk)

**RM80 per month**  
(excluding weekends and public holidays)

#### HOW TO APPLY?

- Prepare these Information/Documents to create your account
  - Student ID number
  - Course Name
  - Scanned copy of Student ID card

- Create your Sunway Parking account  
<https://seasonpass.sunwayparking.com/dashboard>

\*Prices stated are subject to change

### SUNWAY UNIVERSITY BASEMENT PARKING

First 2 hours : RM2.00  
Subsequent hour : RM1.00  
Maximum charge per entry : RM5.00  
Ticketless & cashless - Payment via:  
Touch & Go / Sunway Super App

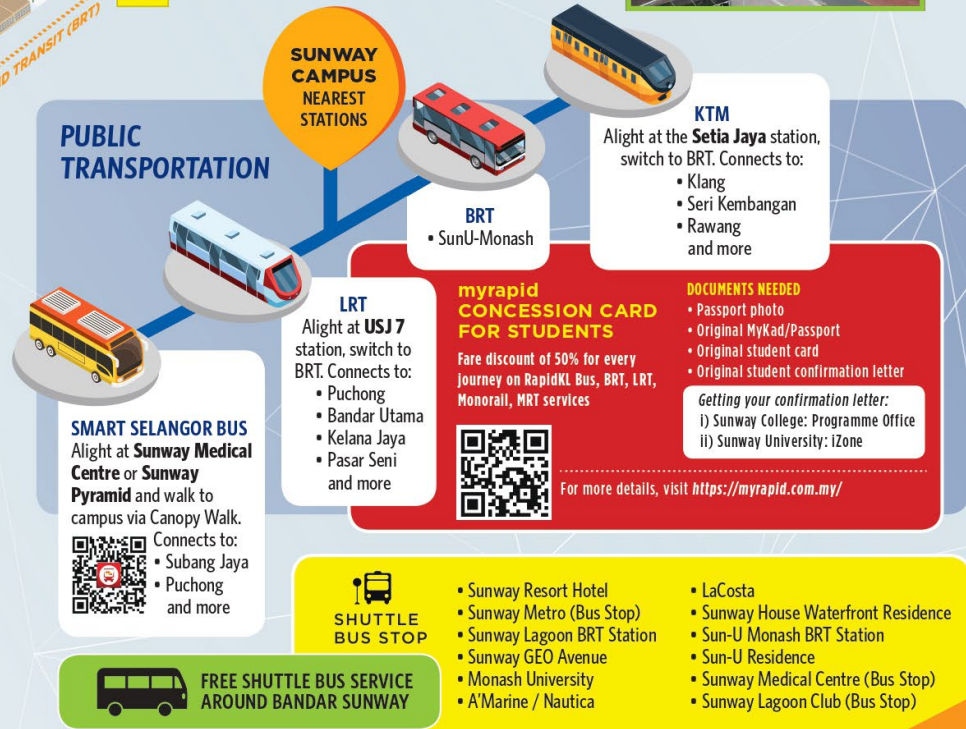
### BRT COMPLEX (PARK & RIDE)

Opposite Monash University  
 10 mins walk to campus (via Canopy Walk)




First 3 hours : RM3.00  
Subsequent hour : RM1.00  
Maximum charge per entry : RM7.00

## PUBLIC TRANSPORTATION

### SUNWAY CAMPUS NEAREST STATIONS



**Follow Us on  
Social Media:**

-  [facebook.com/SunwayUniversity](https://facebook.com/SunwayUniversity)
-  [@SunwayU](https://twitter.com/SunwayU)
-  [@SunwayUniversity](https://instagram.com/SunwayUniversity)
-  [@SunwayUniversityOfficial](https://youtube.com/SunwayUniversityOfficial)
-  [linkedin.com/school/sunway.university](https://linkedin.com/school/sunway.university)

